

View All File Accessibility Issues

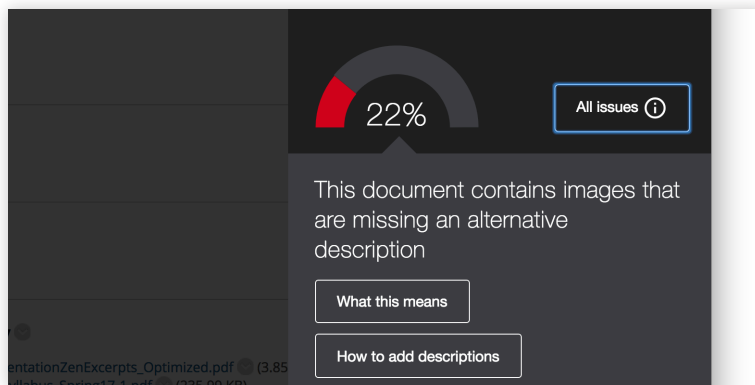
Choose which issues to address first with “All Issues” tab

Ally Micro-Learning

Creating accessible digital learning content can be a challenge, and a single course file may contain multiple issues impacting its accessibility for students. Ally gives you options for fixing those issues, allowing you to craft an accessibility strategy suitable to your course needs. Prioritize high-impact issues, or focus on quick fixes first with Ally “All Issues.”

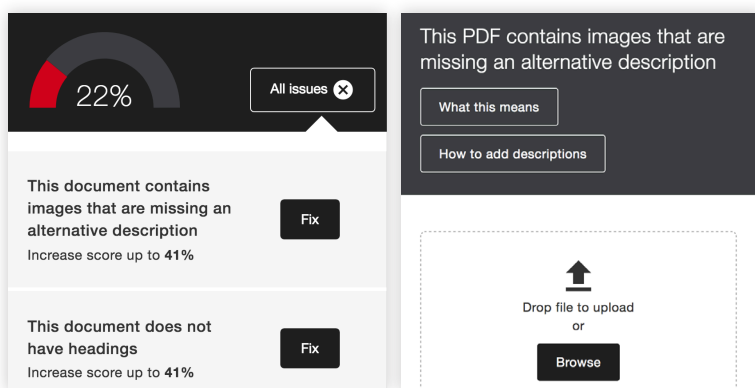
Scenario: A course file has multiple issues to address

1



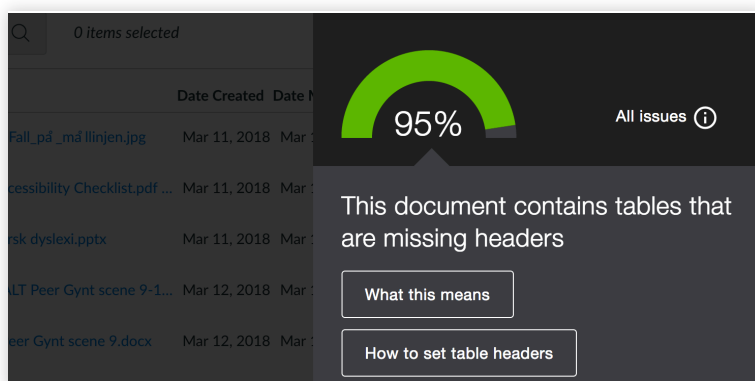
When you click an Ally indicator, the instructor feedback window will let you know the most pressing accessibility issue to correct. It also provides an option to view “All Issues” when the file has multiple accessibility issues to address.

2



From the “All Issues” tab, you can see a list of all the accessibility issues Ally has identified in the file. Ally lets you know how much each issue fix will improve your accessibility score.

3



Choose how you want to proceed in addressing each issue. Click “Fix” to view step-by-step details on how to correct each issue. Upload or add your changes with each issue, or address them all at once. The closer to 100% means a more inclusive learning environment for your students.

Learn more about Anthology Ally at:

<https://www.anthology.com/products/teaching-and-learning/learning-effectiveness/anthology-ally>