

A wide-angle photograph of the University of Houston Downtown campus. In the foreground, a concrete-lined canal with a metal railing runs across the frame. To the right, a grassy slope with a stone retaining wall leads up to a large, multi-story brick building with a grid-like window pattern. In the background, a highway bridge spans across the scene, and a dense urban skyline with various skyscrapers is visible under a cloudy sky.

UNIVERSITY OF HOUSTON DOWNTOWN

Existing Conditions

March 1, 2023

EXISTING CONDITIONS

Agenda

UHD Campus in Houston

- Location and Neighbors

What we have seen

- Campus Access and Mobility
 - Conclusions
 - Did we miss anything
- Outdoor Amenities
 - Conclusions
 - Did we miss anything
- Buildings
 - Conclusions
 - Did we miss anything

Next Steps

EXISTING CONDITIONS

LOCATION AND NEIGHBORS



LOCATION AND NEIGHBORS

Context

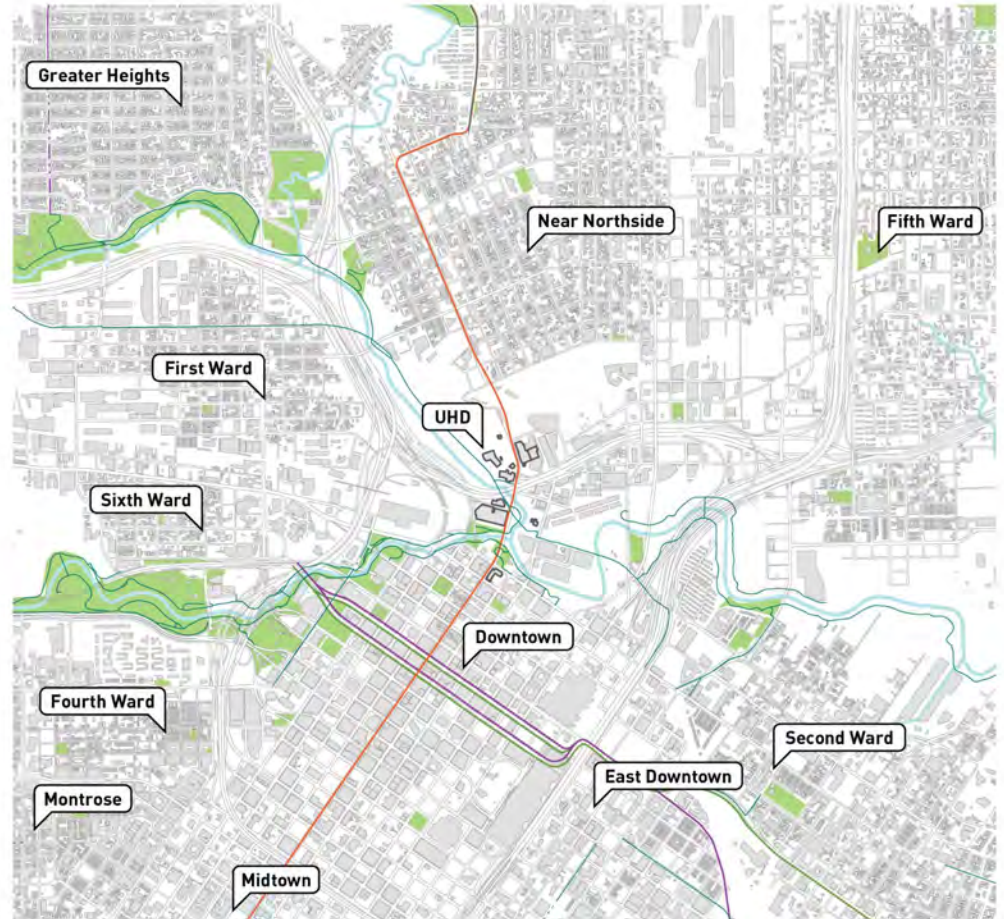
UHD is close to the intersection of several historic neighborhoods.

- The Near Northside and the historic district within Downtown are the closest neighbors.

UHD sits at the intersection of Buffalo Bayou and White Oak Bayou.

UHD Sits at the Intersection of high comfort trails and frequent transit.

UHD is accessible via Houston's expansive freeway and Park and Ride System. It has the same connectivity benefits that Downtown has historically had.

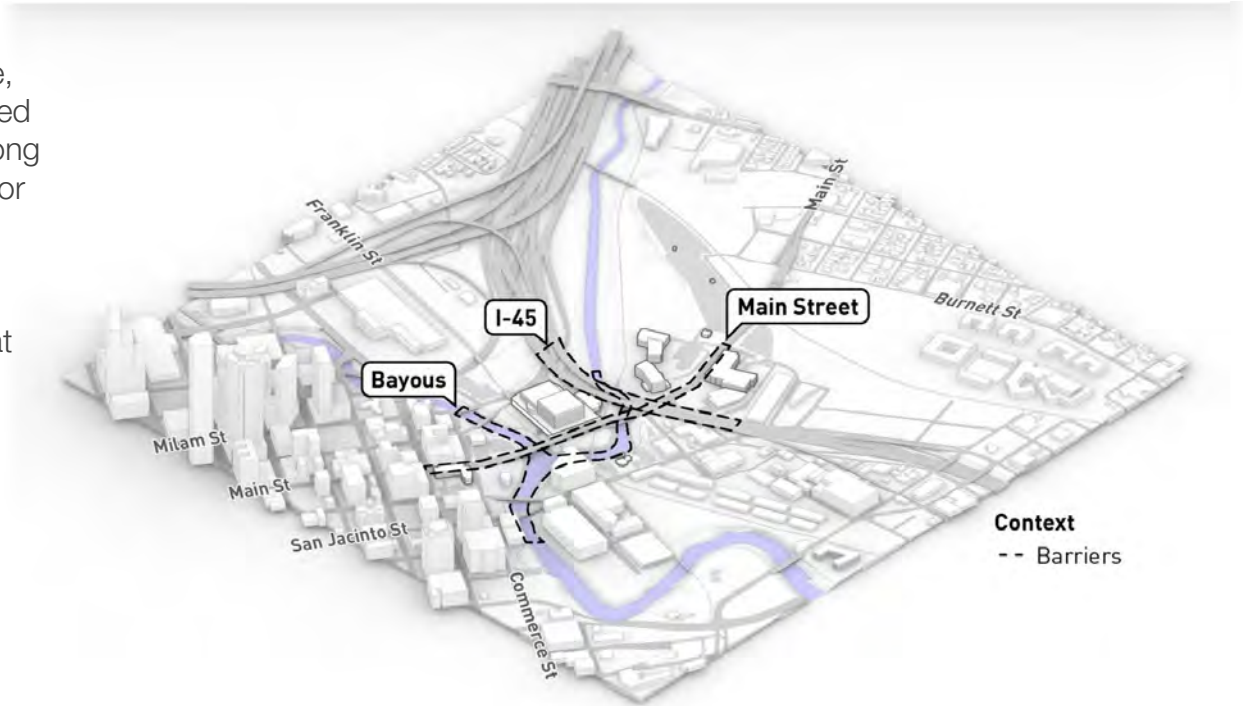


LOCATION AND NEIGHBORS

Context

Even though this is the general case, UHD is part of the more disconnected side of Downtown, but stretches along Main St, the only north-south corridor in the area.

- The only north-south is Main Street and San Jacinto
- Downtown street grid ends at the bayou



LOCATION AND NEIGHBORS

Being in Downtown is a great benefit

Being in Downtown is a good thing

- Close to a lot of employers
- Near art and culture
- In an place where lots of other things are happening
- In the heart of the region

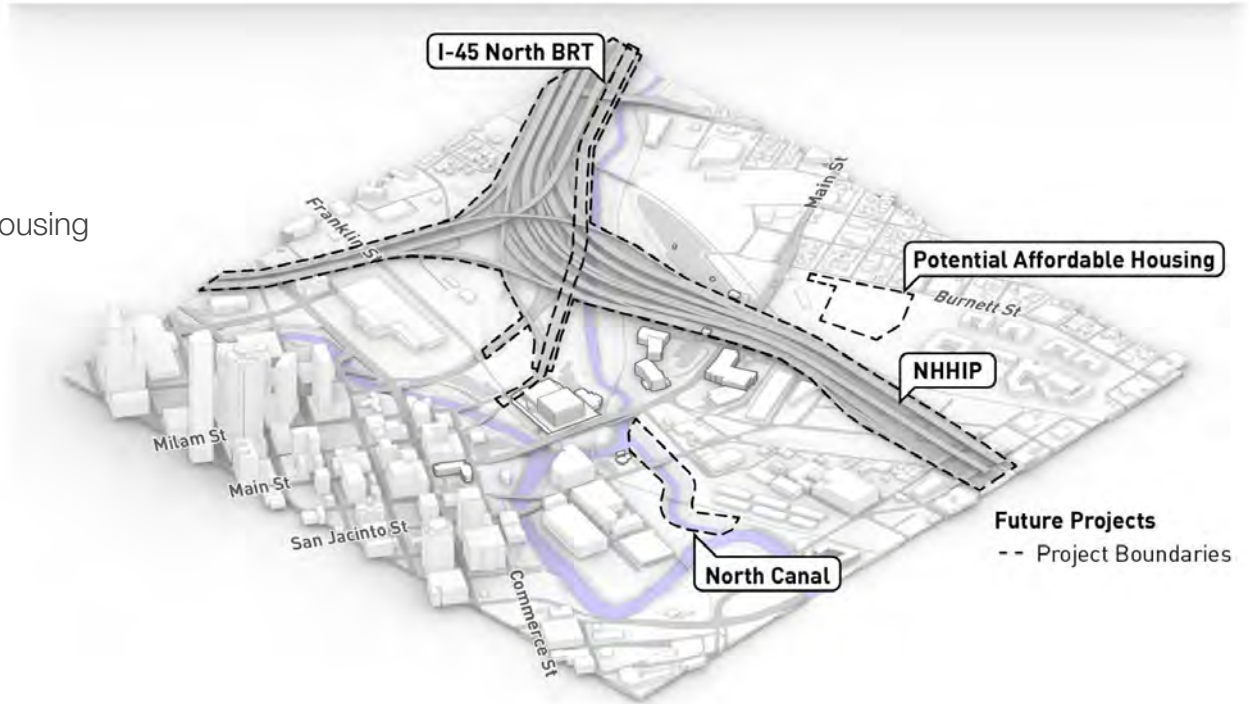


LOCATION AND NEIGHBORS

Future projects which will impact UHD

Projects

- NHHIP
- North Canal
- Future BRT
- Potential Future Affordable Housing in Near Northside

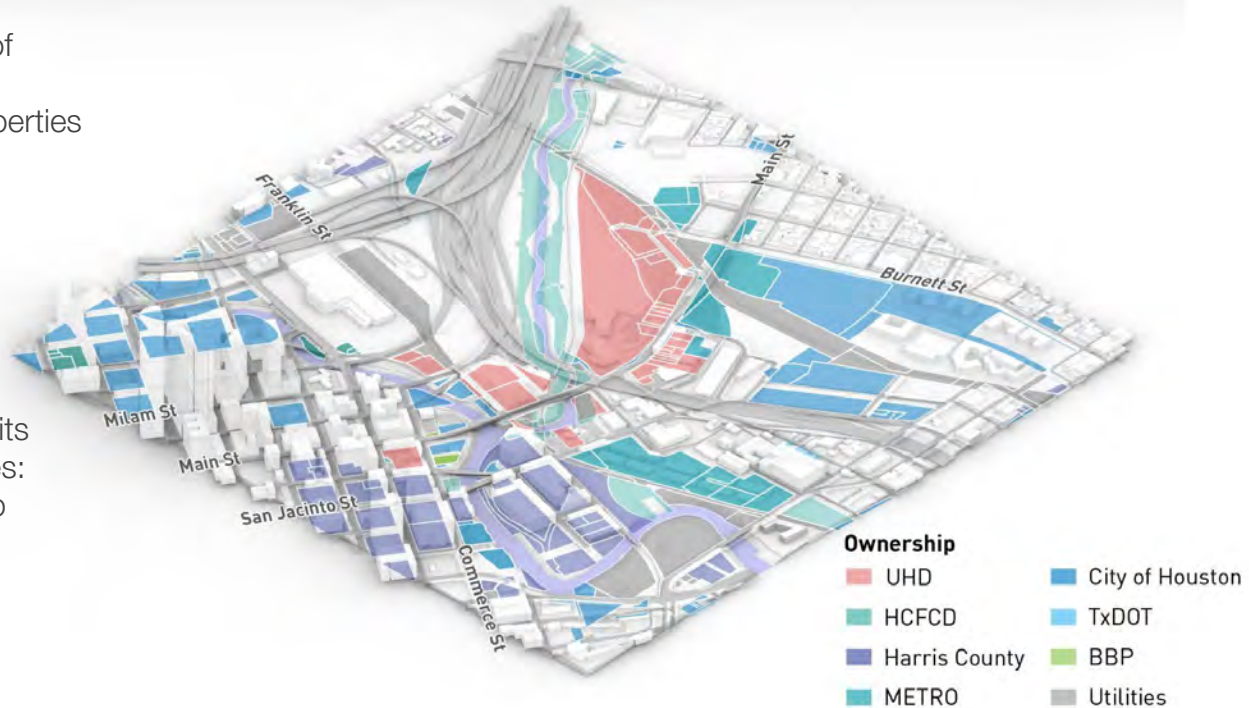


LOCATION AND NEIGHBORS

Public-owned Land Around UHD Campus

UHD is surrounded by a large amount of publicly owned properties.

- The ownership of the public properties varies and includes:
 - The City of Houston
 - Harris County
 - METRO
 - HCFCD
 - TxDOT
- The ownership of other non-profits and notable area owners includes:
 - Buffalo Bayou Partnership
 - CenterPoint
 - Railroad Companies



EXISTING CONDITIONS

CAMPUS ACCESS AND MOBILITY



CAMPUS ACCESS AND MOBILITY

Pedestrian Circulation

The Main St path connecting One Main Building with the buildings across the current freeway is the most direct and well used path on campus

Each Building has an exterior space that is both used for moving and gathering



CAMPUS ACCESS AND MOBILITY

UHD sits at the heart of the Bayou Greenways Network

Trails stretching along bayous in 3 directions

White Oak

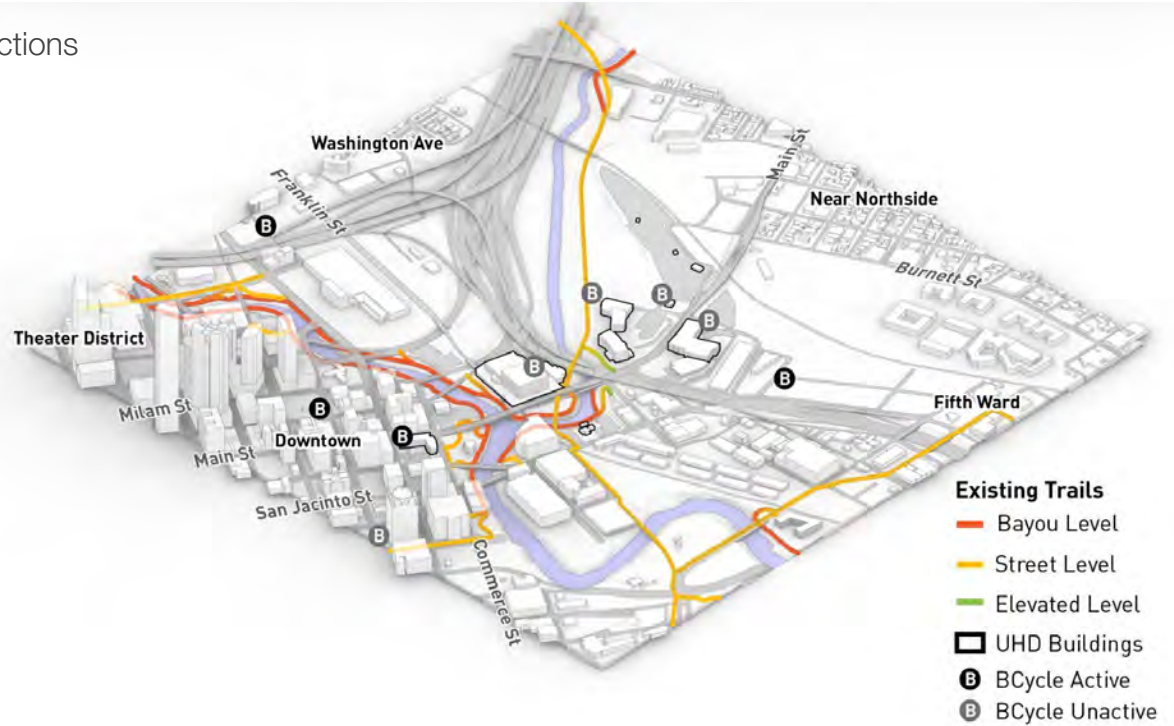
- Near Northside
- First Ward
- Heights

Buffalo Bayou West

- Downtown
- Theater District
- Montrose
- Washington Ave

Buffalo Bayou East

- EaDo
- East End
- Fifth Ward



CAMPUS ACCESS AND MOBILITY

Trail connections around One Main are complex

At One Main, there are trails and sidewalks on three levels

Bayou Level

Street Level

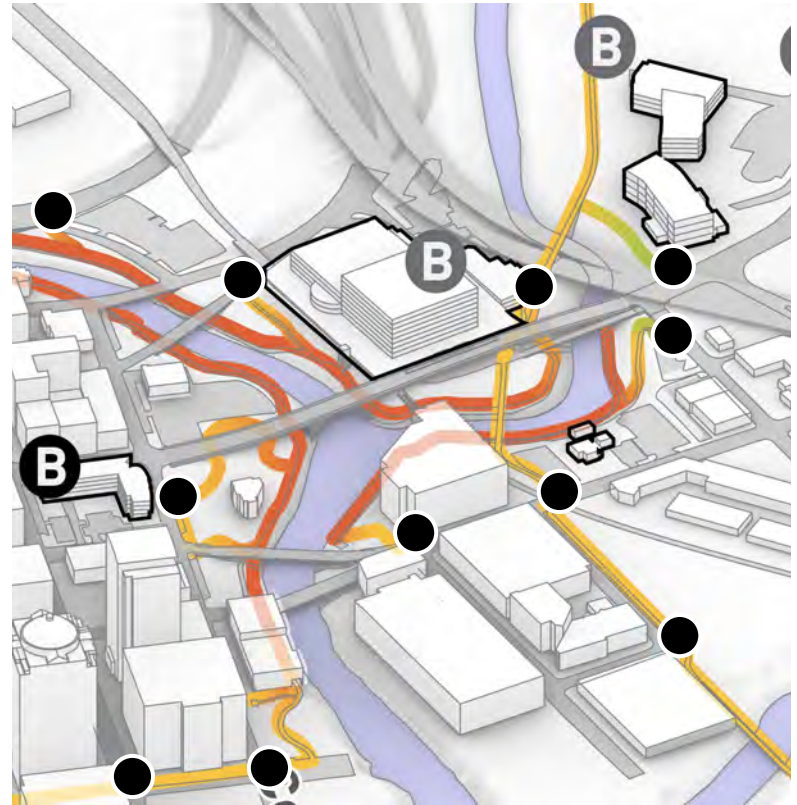
One Main plaza level

Trails go safely under streets and rail lines

There are only a few, connections, and they are poorly marked

The trail creates a north/south connection across White Oak connecting One Main to the northern campus buildings

There are no trails crossing Buffalo Bayou



CAMPUS ACCESS AND MOBILITY
Bike and Trail Circulation

One Main
Level Trail

Bayou Level Trail

Bayou Level Trail

Street Level Trail



CAMPUS ACCESS AND MOBILITY

Bike and Trail Circulation

Path connecting
different levels



CAMPUS ACCESS AND MOBILITY

Bike and Trail Circulation



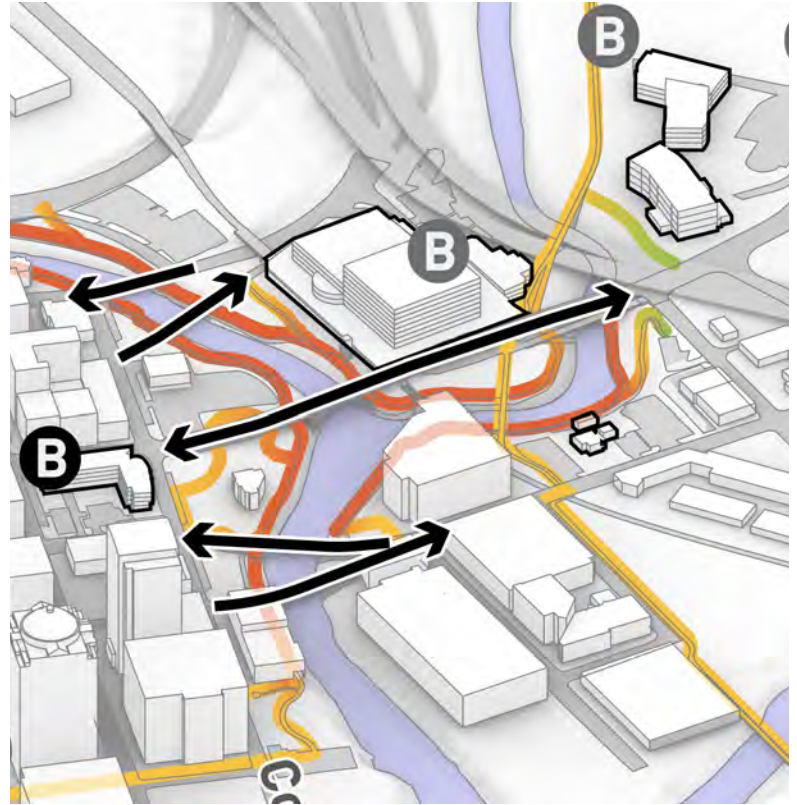
Out of 5, this is the only active BCycle station on campus

CAMPUS ACCESS AND MOBILITY

Sidewalk connections across the bayou are not great

5 bridges cross Buffalo Bayou

- Main Street Bridge is the only wider sidewalk, and protected, and crosses both Buffalo Bayou and White Oak Bayou
- The other sidewalks, including Milam/Travis, are not protected and narrow



CAMPUS ACCESS AND MOBILITY

Sidewalk connections across the bayou are not great

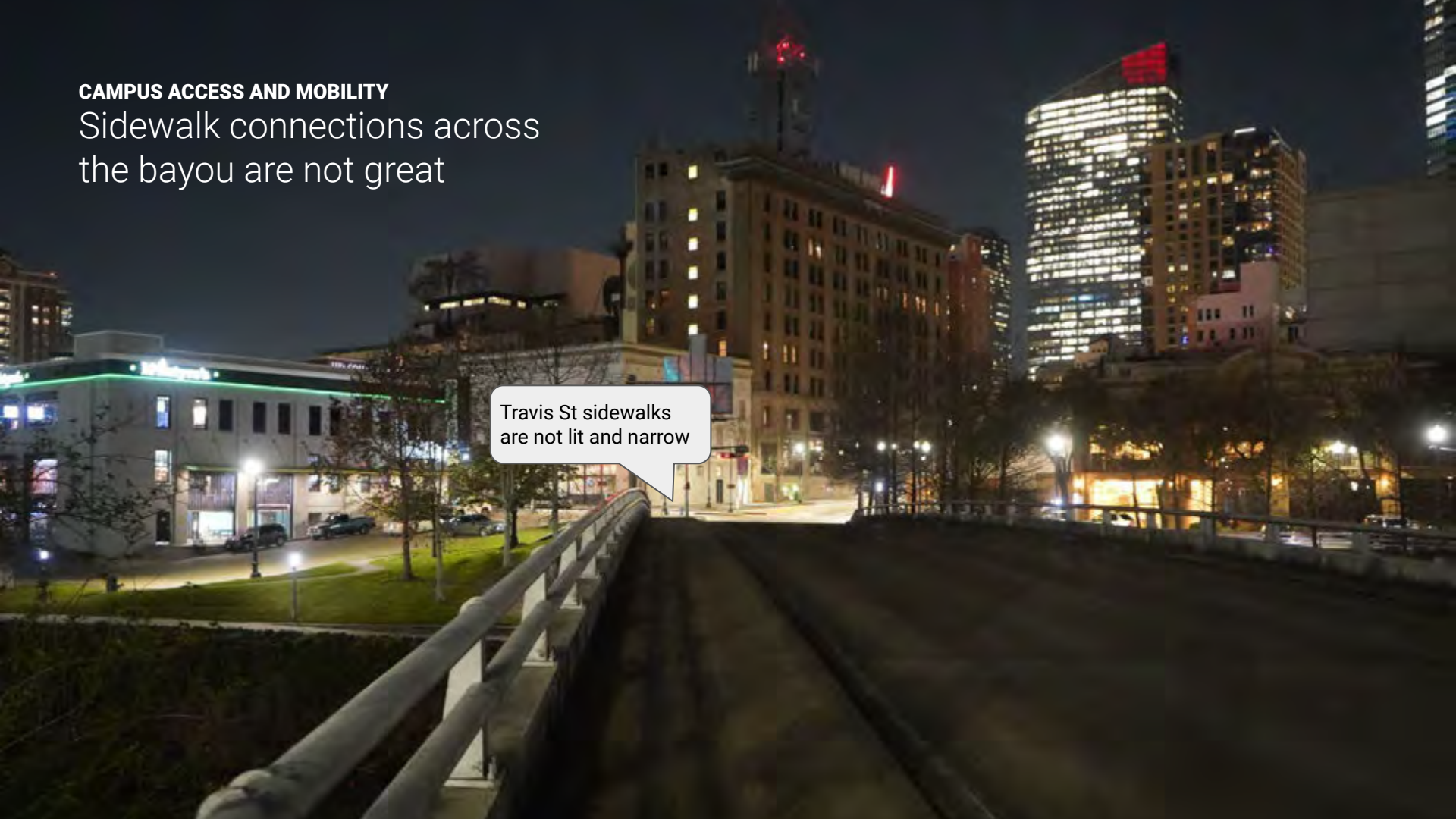


The only protected sidewalk to and from UHD

CAMPUS ACCESS AND MOBILITY

Sidewalk connections across
the bayou are not great

Travis St sidewalks
are not lit and narrow



CAMPUS ACCESS AND MOBILITY

Sidewalk connections across the bayou are not great

Milam/Travis
inaccessible
triangle



CAMPUS ACCESS AND MOBILITY

Transit Access

UHD has great access to the Red Line Light Rail

- METRO Light Rail Red Line serves the front door of campus
- The Preston station serves the south end of campus
- Burnett Station is close to the north end, but does not have an entry on that side.

Local Bus routes do not directly connect to campus

- Local Bus routes #51, #52, and #11 have stops on campus, but none are adjacent to a UHD building entrance



CAMPUS ACCESS AND MOBILITY
Transit Access

Red Line Station
stops at the UHD
front door



CAMPUS ACCESS AND MOBILITY
Transit Access

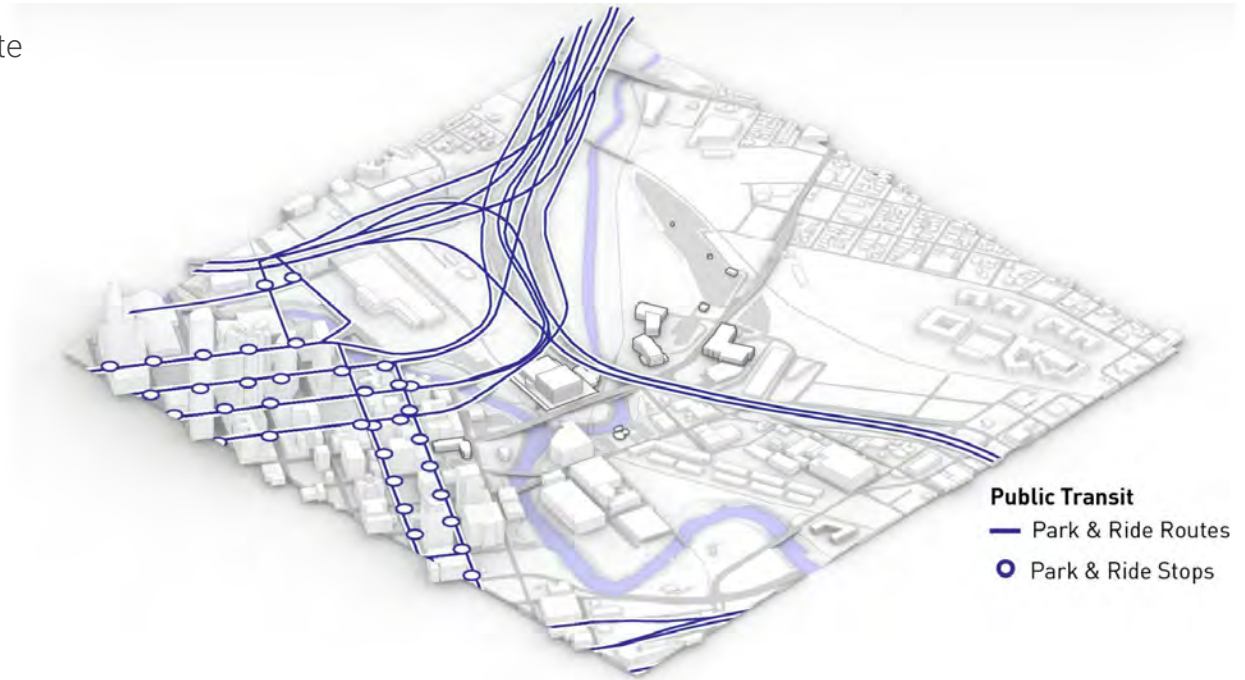
Bus Stop for #51
and #52 Buses



CAMPUS ACCESS AND MOBILITY

Park and Rides

Every Downtown Park and Ride route comes within a few blocks of campus, but the nearest stops are often far from campus buildings



CAMPUS ACCESS AND MOBILITY

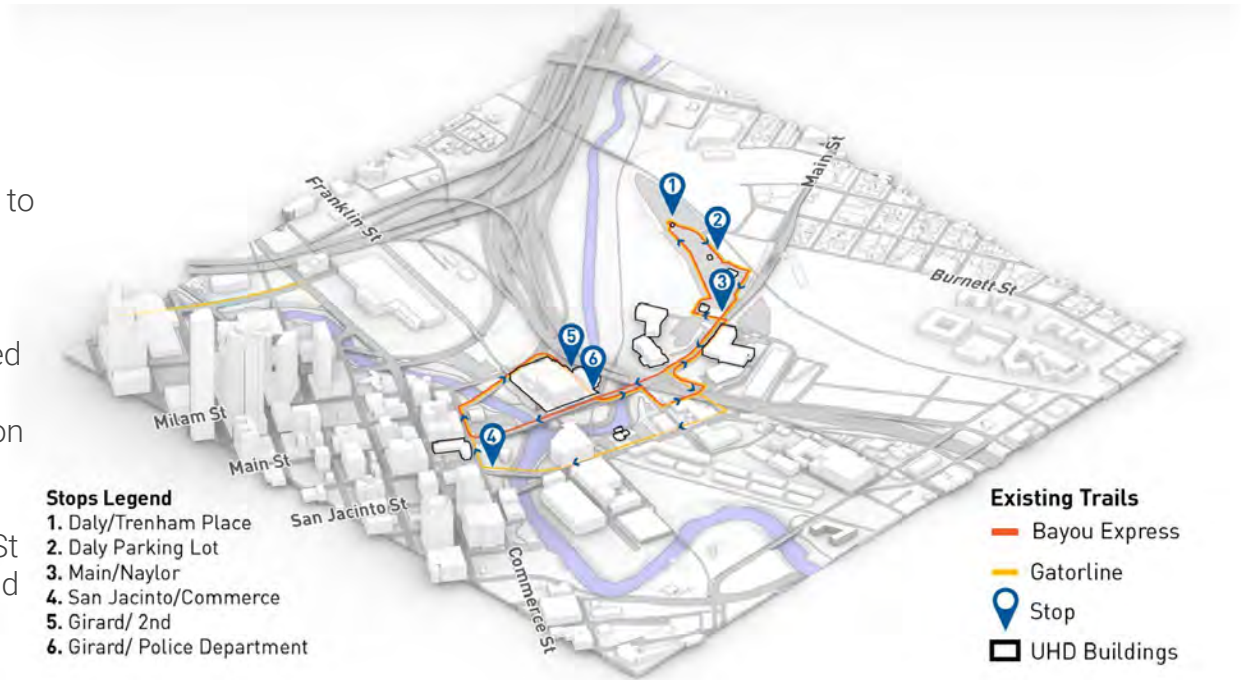
Shuttle Service

Shuttles play an essential role in connecting the Parking lots to campus buildings

Shuttles are sometimes also useful to travel between buildings

The shuttle routes are long and indirect because of the disconnected street network and the inability to stop at the front door of One Main on Main Street.

If there was a shuttle stop at Main St and Commerce St, both routes could be consolidated into one



CAMPUS ACCESS AND MOBILITY
Shuttle Service

The shuttle service runs two routes: The Bayou Express and the Gator Line



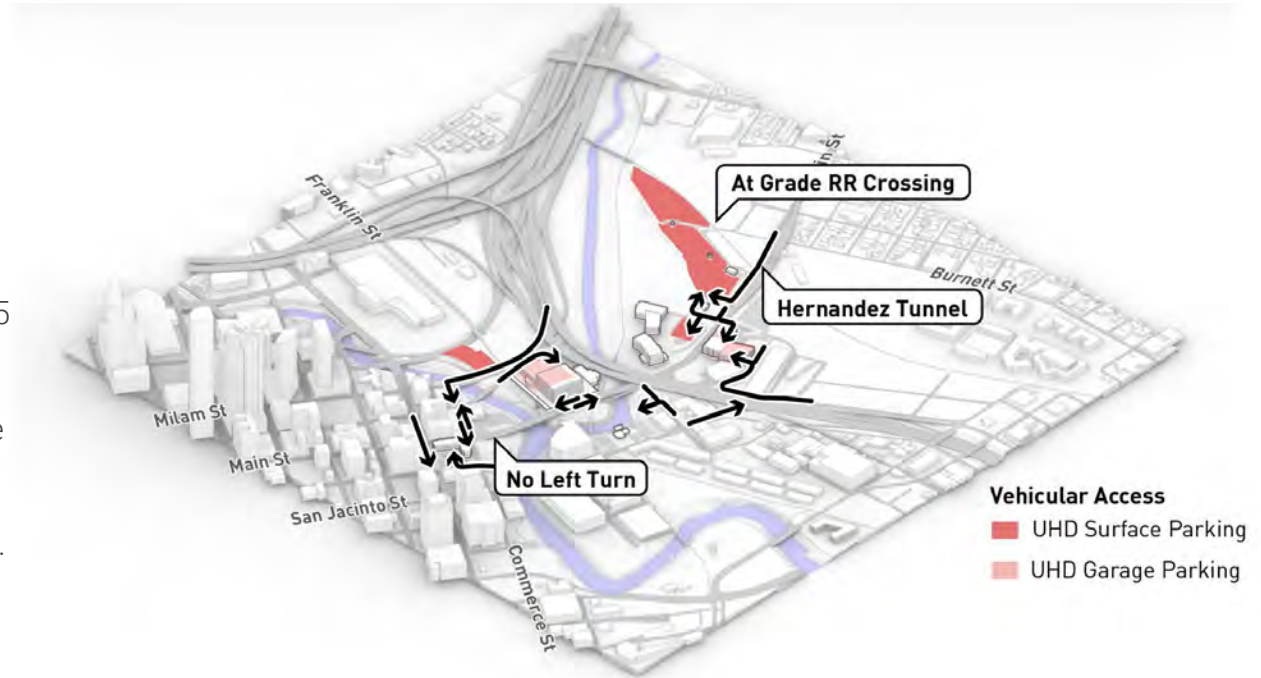
CAMPUS ACCESS AND MOBILITY

Vehicular Circulation Into Campus

Access to campus is not straightforward due to the barriers in and around UHD.

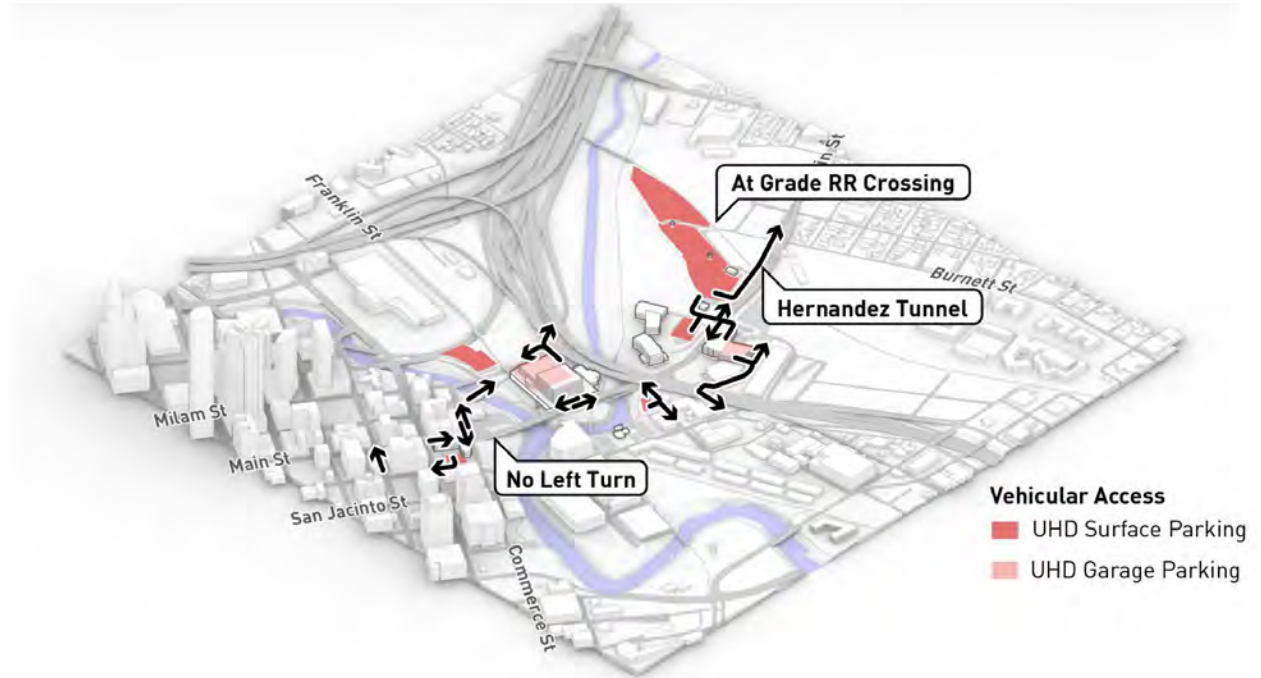
Cars are coming into campus from various points, most campuses have limited amount of entrances.

- Traffic coming off I-10 or I-45 has a very indirect route into campus
- The Girard St entrance to the garage and drop off areas is confusing and has different paths for access and egress.
- Main Street passes all of campus, but does not have access to all buildings
- The only straightforward campus access point is at Main and Naylor.



CAMPUS ACCESS AND MOBILITY

Vehicular Circulation Out of Campus



CAMPUS ACCESS AND MOBILITY

Vehicular Circulation: Girard St



No Left Turn allowed from HOV lane

No Access from the freeway exit

Egress to I45 North

Travis St

Egress to Downtown

Milam St

Access from Downtown

Girard St

CAMPUS ACCESS AND MOBILITY

Vehicular Circulation: Naylor St Entrance



Naylor St entrance is a full 4-way intersection

CAMPUS ACCESS AND MOBILITY

Vehicular Circulation: Signage

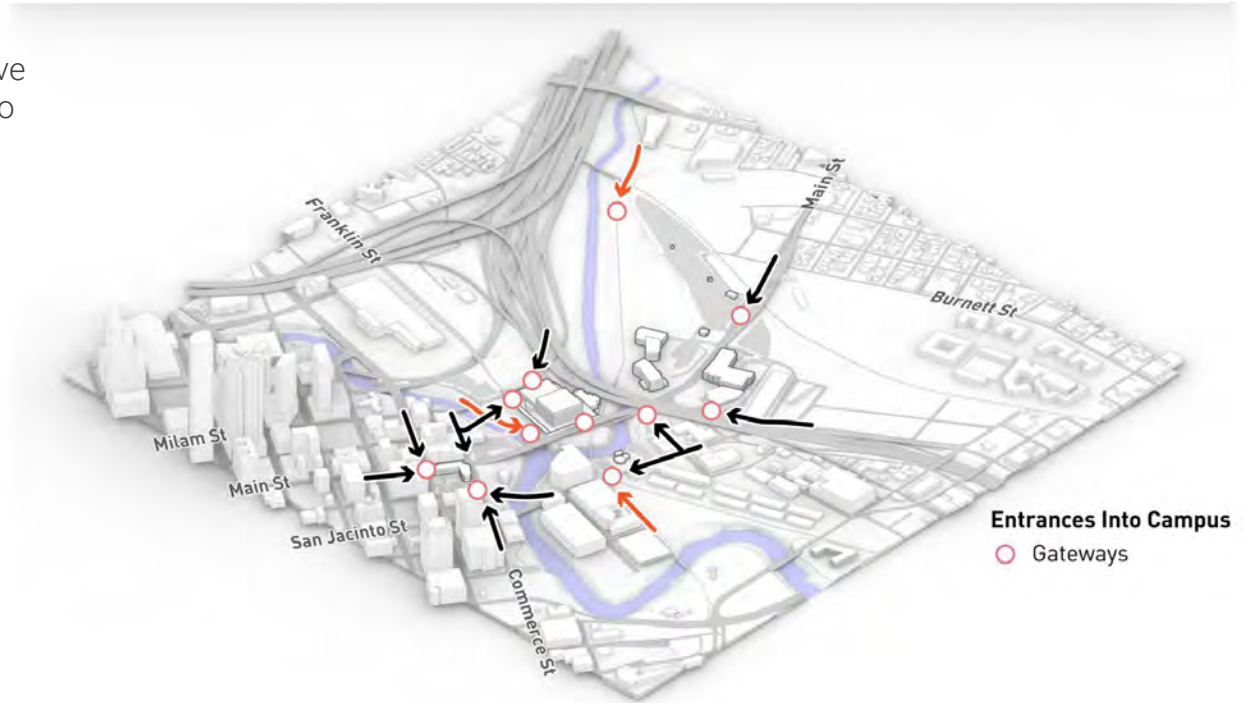


CAMPUS ACCESS AND MOBILITY

UHD has various access points

Different gateways into campus have different levels of school branding to clearly signal the entrance to UHD

- The northwest side of the Girard Street Building is very well branded, but currently challenging to access
- Although already inside campus, the exit of the UHD light rail station is also a gateway into campus



CAMPUS ACCESS AND MOBILITY

Some gateways into campus are branded

Gateway Signage to signal the entrance into campus



Gator

CAMPUS ACCESS AND MOBILITY

School spirit monuments and signage are distributed across UHD



CAMPUS ACCESS AND MOBILITY

Existing wayfinding is heavily favoring UHD Visitor Parking

Legend

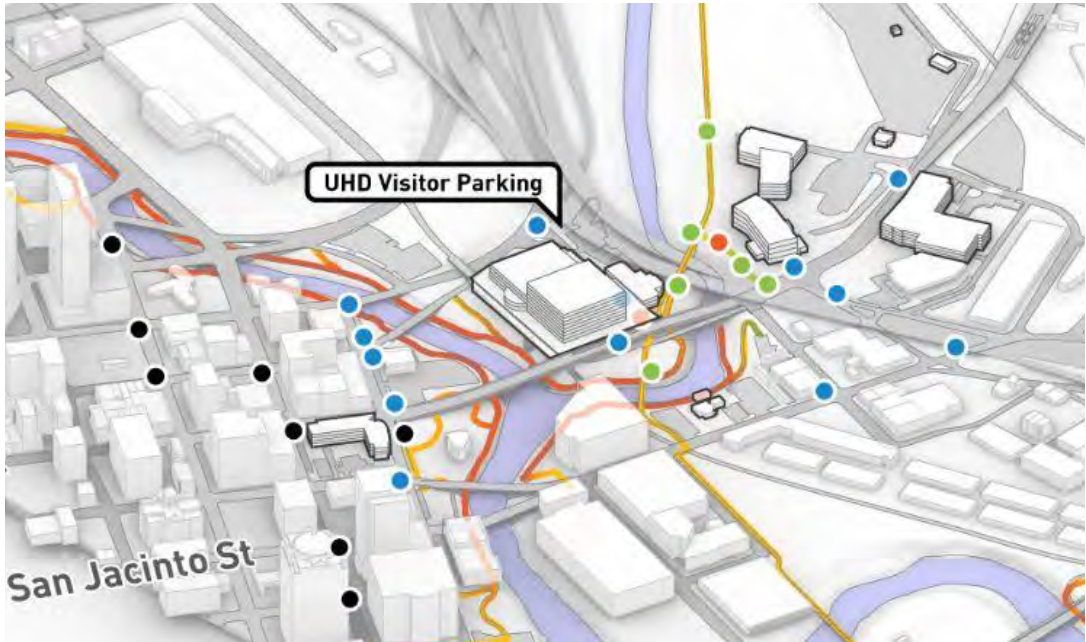
UHD visitor parking wayfinding signage is the most prominent

- Every blue dot on the map, with the exception of one in the Girard Street Building, points to UHD Visitor Parking

The White Oak Bayou has Houston Parks Board signage at major intersections while crossing UHD

UHD building and amenities wayfinding is not prominent on sidewalks, paths, and trails

A number of downtown wayfinding signs point to UHD



CAMPUS ACCESS AND MOBILITY

Existing wayfinding is heavily favoring UHD Visitor Parking



Although the most prominent, UHD visitor parking signs are small

CAMPUS ACCESS AND MOBILITY

UHD building and amenities
wayfinding is not common



One of the only building
amenities wayfinding
signs on campus

CAMPUS ACCESS AND MOBILITY

UHD building and amenities
wayfinding is not common



White Oak Bayou trail and connections have Bayou Greenways wayfinding signage

CAMPUS ACCESS AND MOBILITY

Parking

There is plenty of parking

Largest amount of parking is away from the campus buildings

Proposed I45/I10 Alignment impacts the parking area



CAMPUS ACCESS AND MOBILITY

Parking: Daly Parking Lot



The biggest surface parking garage is also the farthest from campus buildings

CAMPUS ACCESS AND MOBILITY

Parking: VSG Vine St Garage



UHD has invested in parking Garages

CAMPUS ACCESS AND MOBILITY

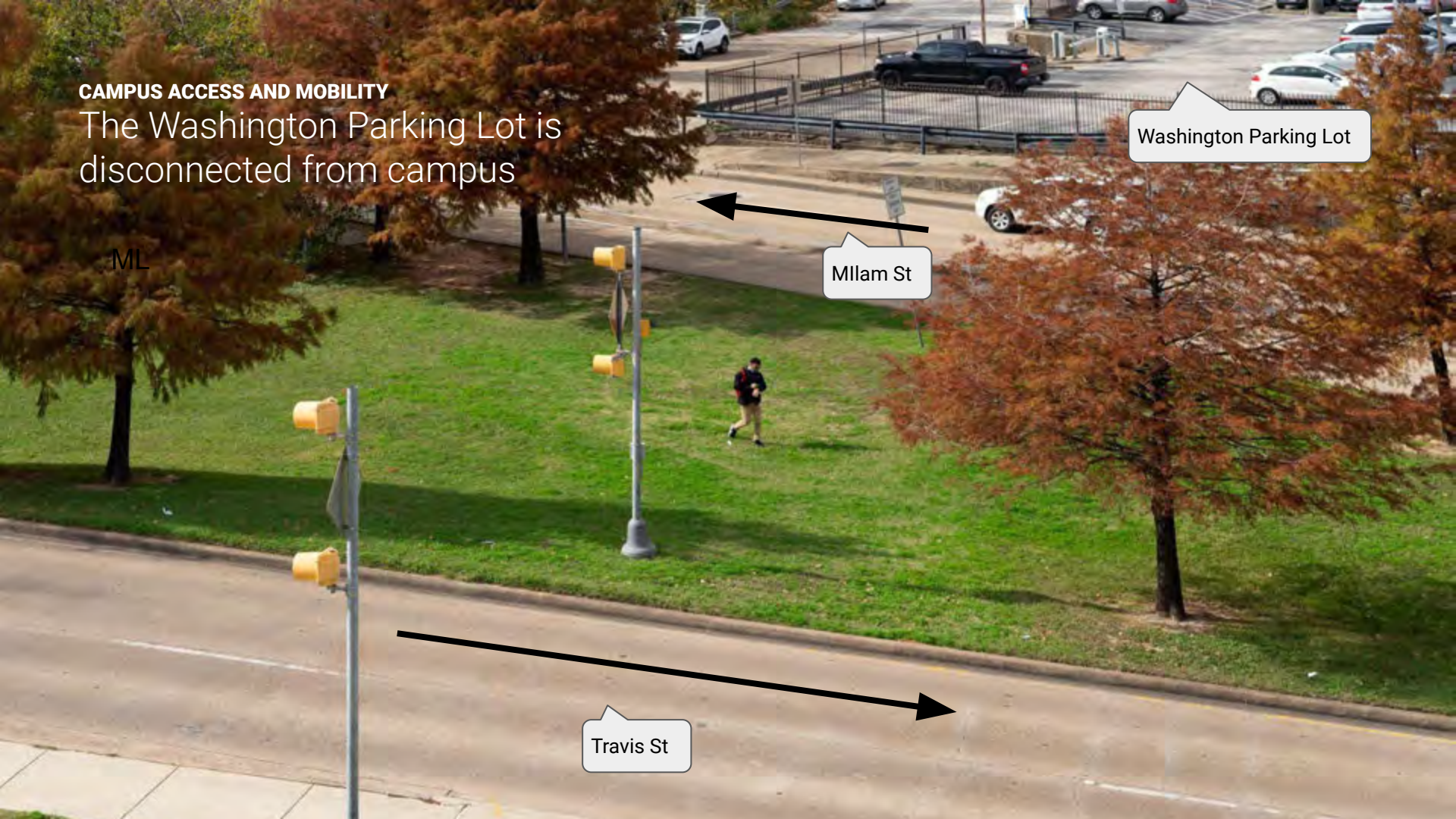
The Washington Parking Lot is disconnected from campus

Washington Parking Lot

Mllam St

Travis St

ML

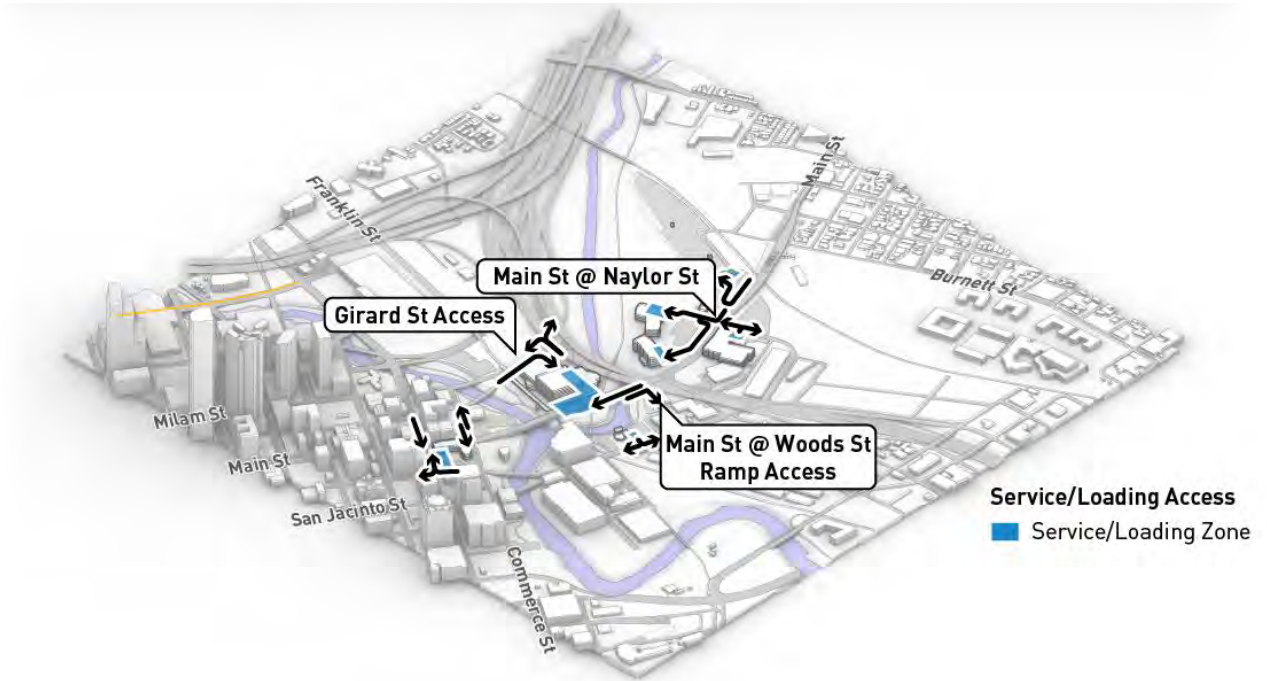


CAMPUS ACCESS AND MOBILITY

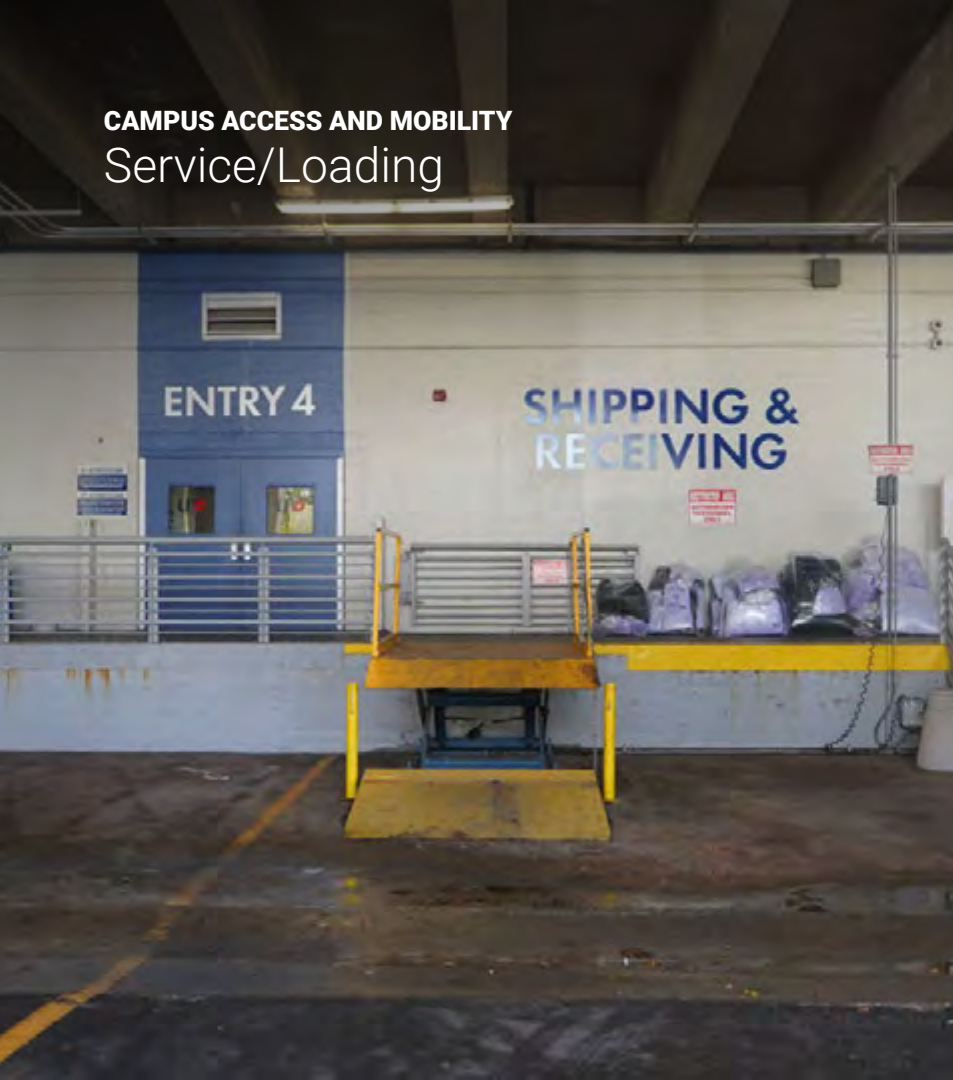
Service/Loading

Every building has loading service areas

One Main loading/service areas are the hardest to access



CAMPUS ACCESS AND MOBILITY
Service/Loading



CAMPUS ACCESS AND MOBILITY

NHHIP

Billions of dollars to rebuild the highway but not solving access issues to campus

Ramps for I-45 will work the same way as today

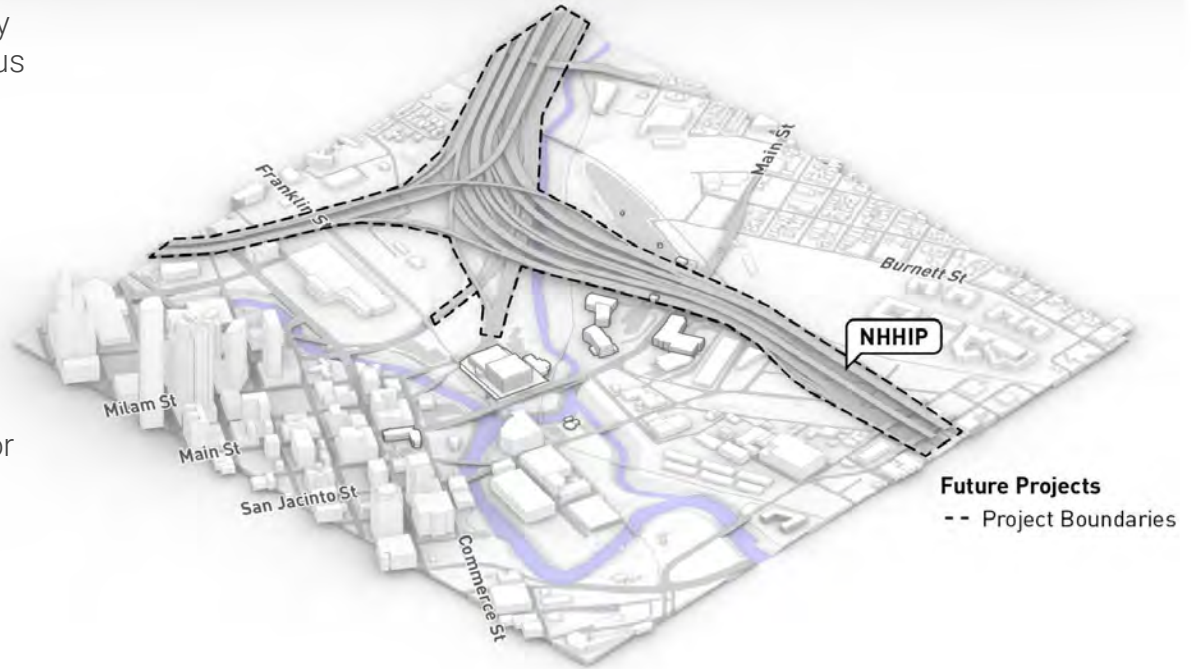
No access from I-10 Katy freeway

Ramps from I-10 East connect awkwardly at Main/Daly

No provision for better located stops for Park and Ride service or for BRT stops near campus

Positives

- Downtown Districts and City of Houston have done work on how to improve the local street network along with this project



CAMPUS ACCESS AND MOBILITY

Conclusions

Are we missing something?

What do you see are the biggest challenges?

What do you see are the biggest opportunities?

EXISTING CONDITIONS

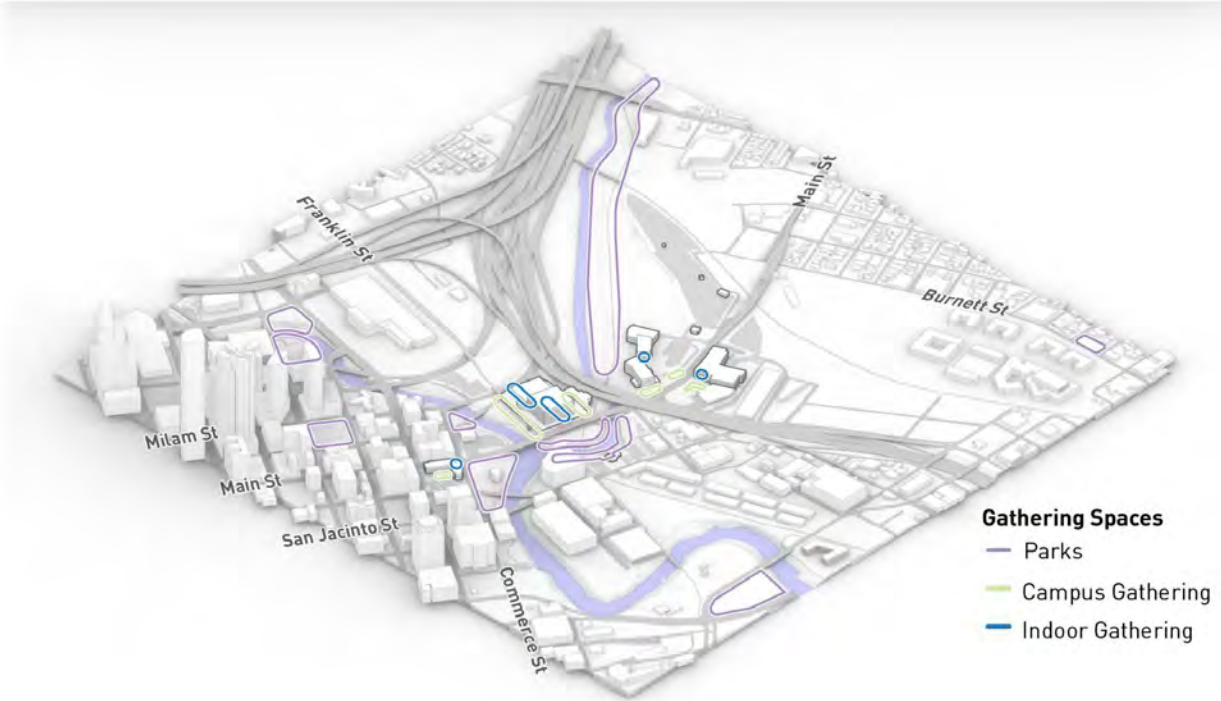
OUTDOOR AMENITIES



OUTDOOR AMENITIES

Gathering Spaces

Campus outdoor gathering spaces are weak but there are good opportunities to improve them



OUTDOOR AMENITIES

Gathering Spaces

Buildings tend to have their own gathering spaces

Spaces tend to not be shared between buildings. Each building has covered outdoor seating

General lack of outdoor sitting

One Main South Deck

- The gathering plaza is amazing
- The plaza is well located

The food truck pavilion is a great space to eat and hang out

The space between the Wellness Center and the Science and Research building is well connected and shared between both buildings.



OUTDOOR AMENITIES

Parks

There is a good amount of park space around campus but generally not configured for outside gathering



OUTDOOR AMENITIES

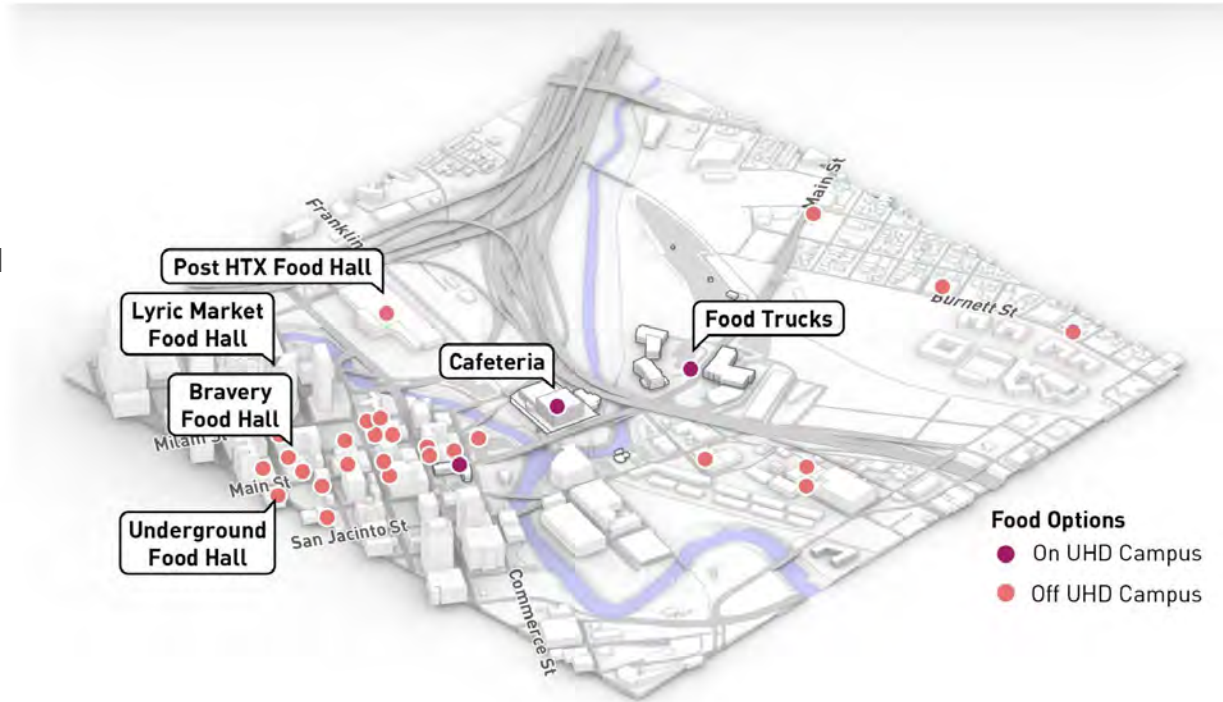
Food

There are small cafes within campus buildings:

- One Main has a variety of food options but is not as inviting as it should be
- Small cafe inside business school
- Small cafe inside science and technology building

The food truck is a great food option but is not offered daily

Off campus food options in Downtown are available



OUTDOOR AMENITIES

Existing Lighting

Overall, UHD has well lit connections and gathering areas

Areas highlighted in the map are not well lit compared to the rest of the pedestrian paths

Usually, bayou level trails are not lit



Existing Trails

— Pedestrian Paths

— Exterior Building Paths

— Bayou Level

— Street Level

— Elevated Level

OUTDOOR AMENITIES



Overall, UHD has well lit connections and gathering areas

The main paths within campus are well lit



OUTDOOR AMENITIES
Existing Lighting

Open parking
lots are well lit



OUTDOOR AMENITIES
Existing Lighting

Access to parking garages is well lit

Parking garages are well lit



OUTDOOR AMENITIES
Existing Lighting



Trails are lit when they are close to campus buildings and when they cross under a bridge.

OUTDOOR AMENITIES
Existing Lighting



CoH and Parks Board trails around campus are not lit and are officially closed after dark

OUTDOOR AMENITIES

Existing Lighting

Exterior building spaces are lit, but sometimes out of the main walking paths

There are various areas of concern, where people have to walk in the dark

OUTDOOR AMENITIES
Existing Lighting



The path to the
White Oak Bayou
greenway is not lit

OUTDOOR AMENITIES

General Stormwater Detention



OUTDOOR AMENITIES

Conclusions

Are we missing something?

What do you see are the biggest challenges?

What do you see are the biggest opportunities?

EXISTING CONDITIONS

BUILDINGS

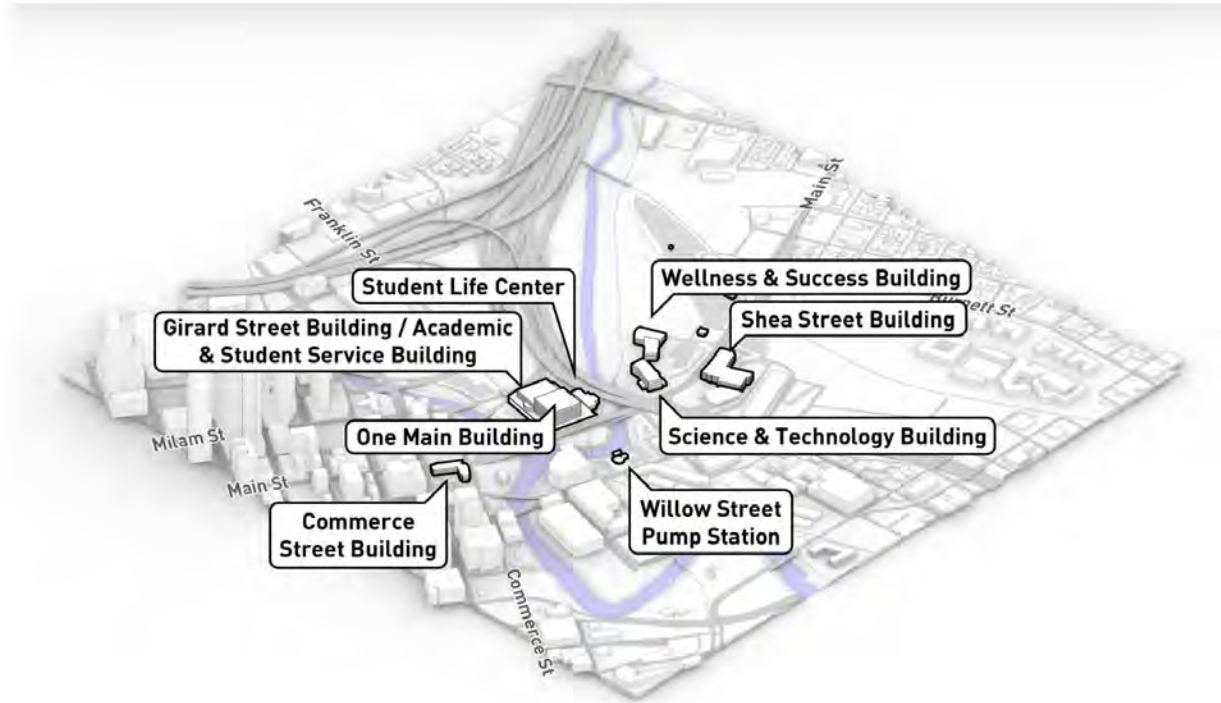


BUILDINGS

UHD is growing

UHD has a series of new buildings

- Girard Street Building
- Science and Technology Building
- Wellness and Success Building



BUILDINGS

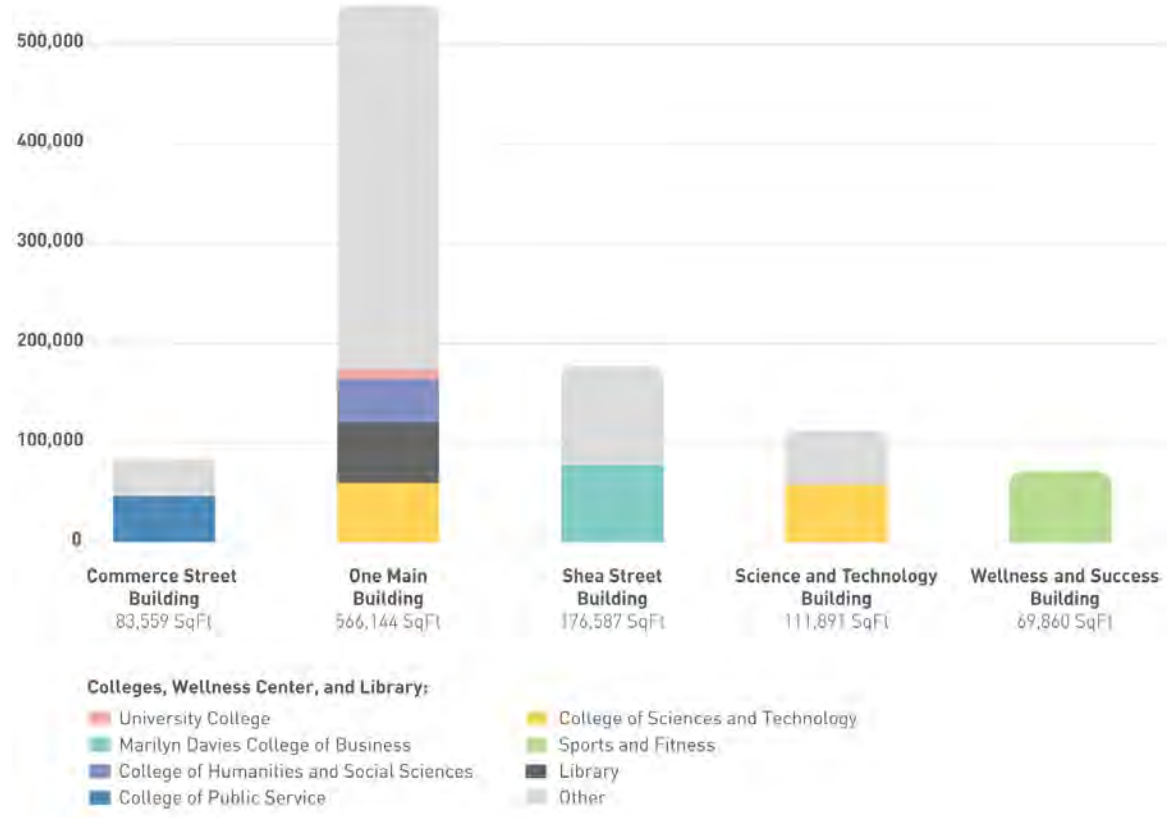
Distribution of Departments

The College of Science and Technology is split into two buildings

One Main Building houses three academic colleges

- College of Humanities and Social Sciences
- College of Science and Technology
- University College

Buildings not here are mostly made up of admin or other non academic programs



BUILDINGS

UHD is growing



Newest buildings on Campus share spaces between each other

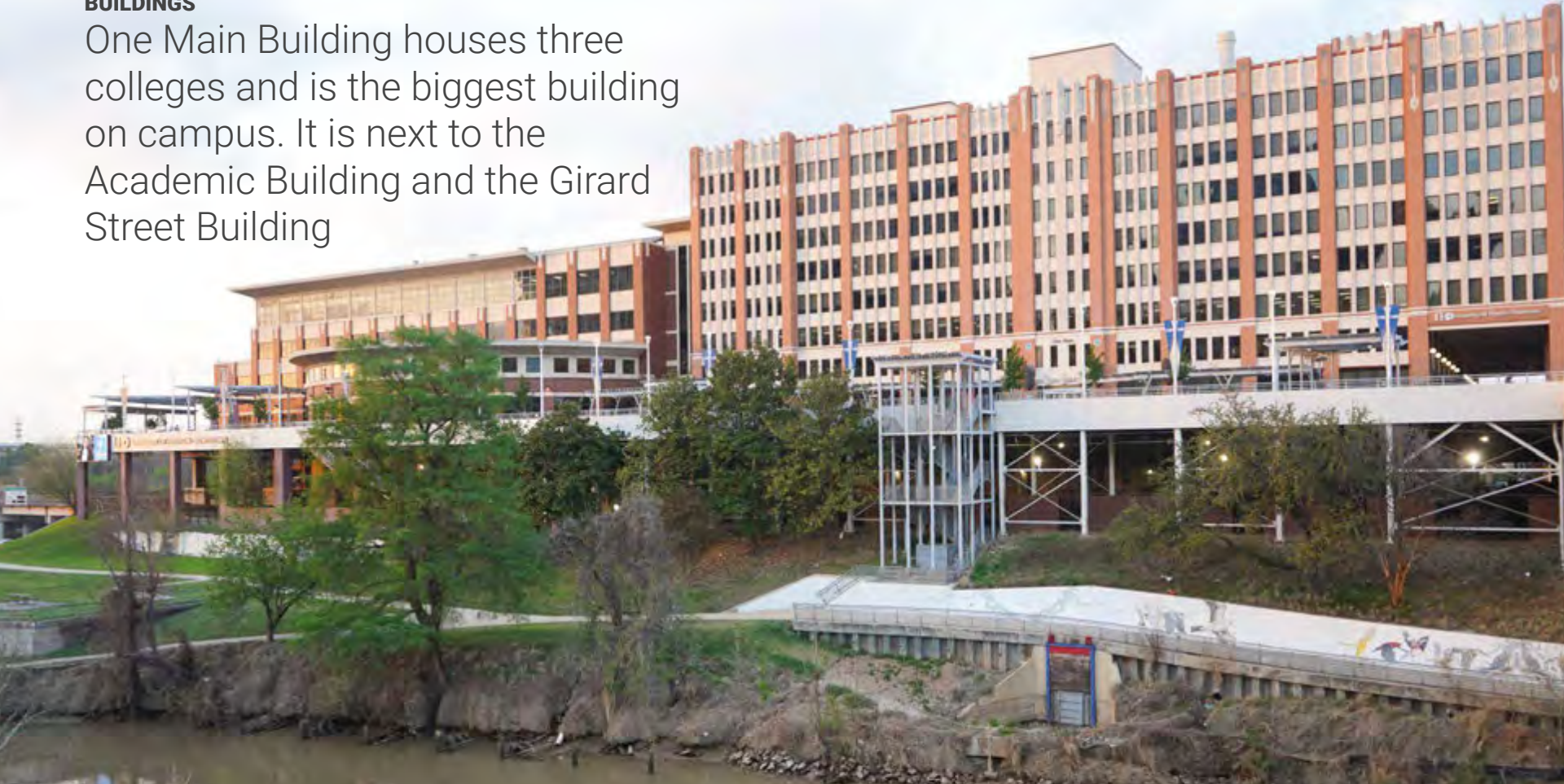
BUILDINGS

The Commerce Street Building is connected with Downtown



BUILDINGS

One Main Building houses three colleges and is the biggest building on campus. It is next to the Academic Building and the Girard Street Building



BUILDINGS

College of Business



BUILDINGS

One Main Building Deck
facing Downtown skyline



BUILDINGS

Outdoor Spaces



BUILDINGS

Indoor/Outdoor Connection

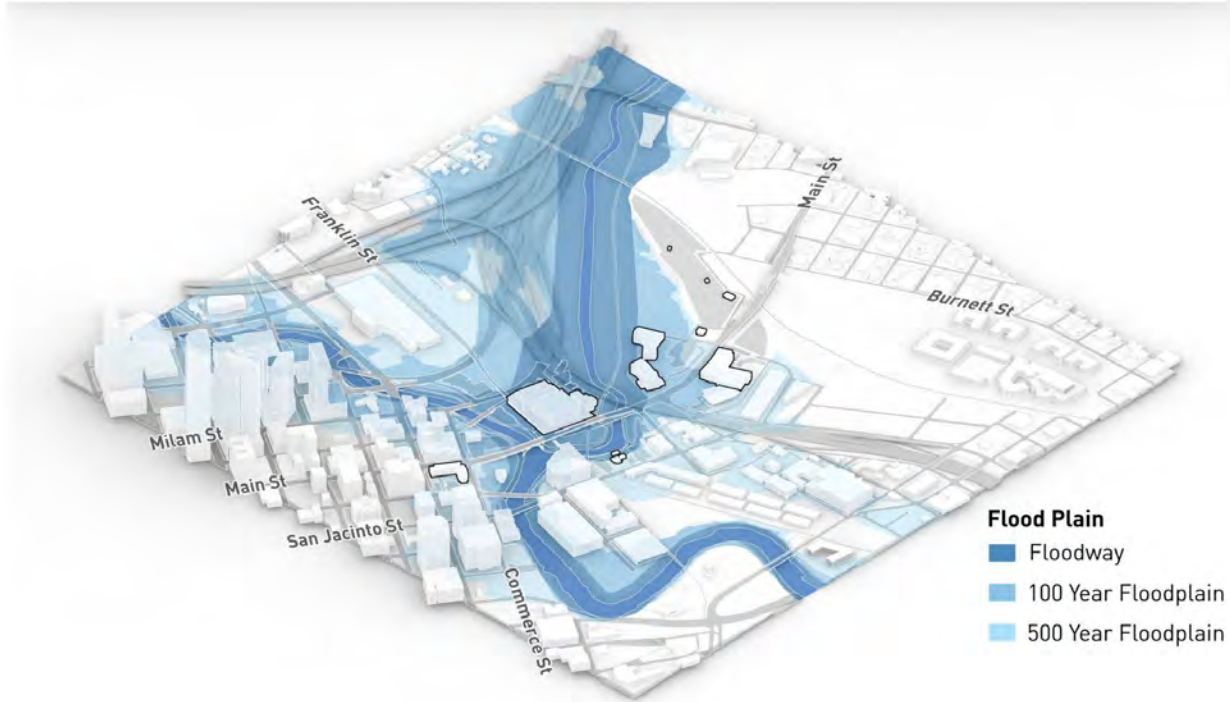
Exits to outdoor spaces are not coordinated well with other buildings



OUTDOOR AMENITIES

Flooding

The confluence of Buffalo Bayou and White Oak Bayou causes flooding issues around the UHD campus.



BUILDINGS

Conclusions

- Buildings feel disjointed from each other
- Some schools have their own buildings and have a clear identity
- Within One Main there are multiple schools and department and they do not have clear identity

Are we missing something?

What do you see are the biggest challenges?

What do you see are the biggest opportunities?

OVERALL

Conclusions

Of these topics, what are the most important to you?

OVERALL

Next Steps

Stakeholder workshop (with a pre-workshop survey) on future university needs, goals for the campus, issues to address, and opportunities with key stakeholders representing

- Provost
- Deans of Colleges
- Academic Affairs
- Registrar
- Faculty & Staff Senate
- Student Services
- Student Government
- Police/Emergency Management
- Parking
- Facilities
- Alumni

Draft Statement of goals to Owner's Steering Committee for Review and Comment - end of March 2023

Final Statement of goals to Owner's Steering Committee - end of April 2023

Submit three concepts to Owner's Steering Committee for Review and Comment - end of May 2023